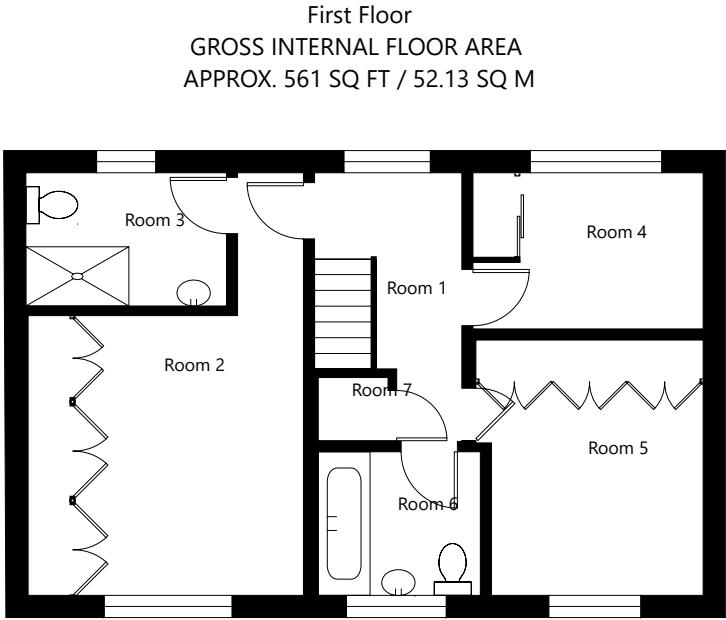
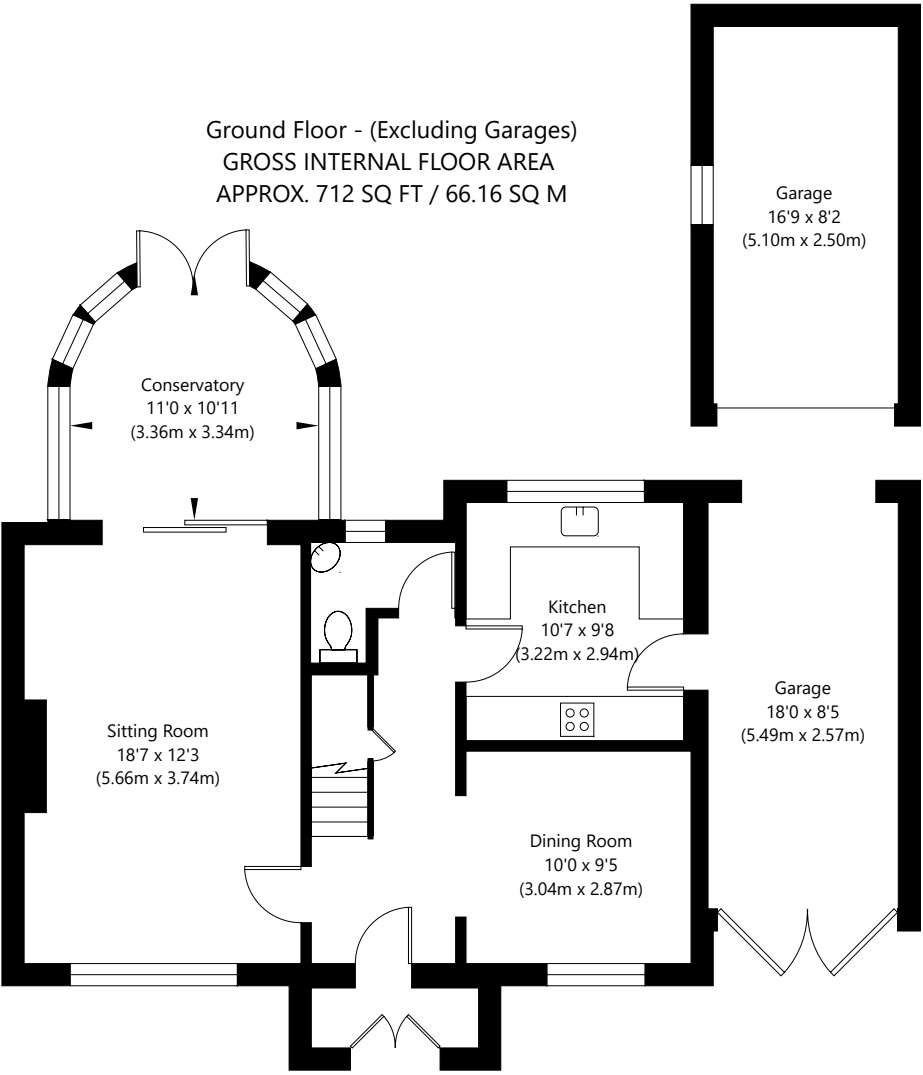


# Park Lane Mews, Awoodley, Leeds LS17 8SN



NOT TO SCALE - FOR ILLUSTRATIVE PURPOSES ONLY  
APPROXIMATE GROSS INTERNAL FLOOR AREA 1273 SQ FT / 118.29 SQ M- (Excluding Garages)  
All Measurements are approximate and should be independently verified.